



Bickley Primary School

Nightingale Lane

Bromley BR1 2SQ

t 020 8460 6790 e admin.office@bickley.bromley.sch.uk

www.bickley.bromley.sch.uk

Headteacher: Mrs E Blake BEd (Hons) NPQH

9th November 2022

Dear Parents and Carers,

ATTENDANCE

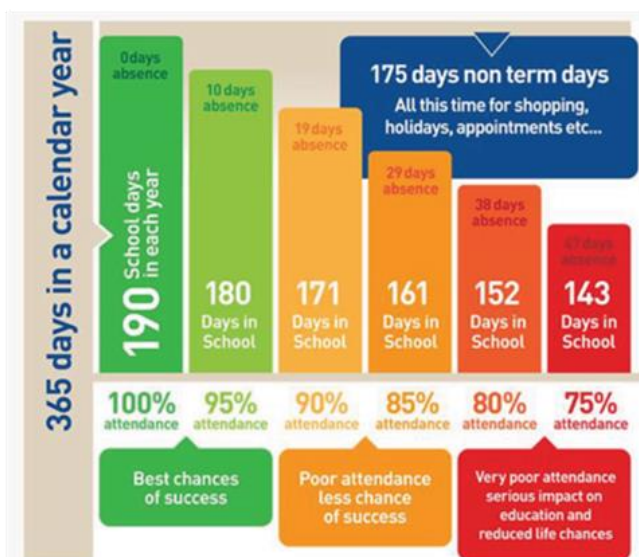
Attendance in all schools has dropped over the past couple of years, due to Covid. We now all need to work together to get figures back to where they were pre-covid.

Attendance at Bickley for last year (2021 – 22) was 94.79%
Our target for 2022 – 23 is 96.4%.

Of course, we fully understand that children become unwell from time to time and may not be well enough to attend school on the odd occasion. However, the main reason for children not attending Bickley at the moment is unauthorised holidays. We do not authorise holidays in term time because families have 13 weeks a year when children are not at school, which is ample time for holidays.

It is worth taking note of the following:

- Pupils with the highest attendance at the end of KS2 have the highest attainment. Pupils not meeting the expected standard in reading, writing and maths had an attendance of 95.3% compared to 96.5% for pupils who met the expected standard.
- At the greater depth standard, the average attendance was 97.3%.
- 90% of young offenders have been persistently absent (i.e. have attendance figures of below 90%) – research shows an association between regular absence and the number of extra-familial harms (risks to the welfare of children that arise within the community or peer group, including sexual and criminal exploitation.)
- Increases in mental health issues – anxiety, fear attachment – are often related to poor attendance.
- Across the Trust, pupils with under 90% attendance attain less well than those who have good attendance. Pupils with poor attendance often have low confidence regarding learning.
- Across NEST schools, the number of children who fall into the persistent absence band (under 90%) has increased.



Bickley Primary School is a member of Nexus Education Schools Trust and is committed to safeguarding and promoting the welfare of children and young people and expects all staff and volunteers to share this commitment. Nexus Education Schools Trust (NEST) is a charitable company limited by guarantee and registered in England and Wales Company Number 08753719. The registered office is at Brackley Road, Beckenham BR3 1RF Website: www.nestschools.org



Bickley Primary School

Nightingale Lane
Bromley BR1 2SQ

t 020 8460 6790 e admin.office@bickley.bromley.sch.uk
www.bickley.bromley.sch.uk

Headteacher: Mrs E Blake BEd (Hons) NPQH

Ways You Can Help

- If your child has asthma and is wheezy in the morning, they can have a puff of their asthma pump and then come to school.
- If your child has a cold, they can still come to school.
- If your child has Covid, please follow the national guidance.
- If your child has an upset stomach, they can return to school after 24 hours of no sickness / diarrhoea

We are happy to administer antibiotics in school – or any other medication that has been prescribed by a doctor. We can also administer Calpol or Piriton if parents give it to us in a named bag with instructions.

And the biggest thing you can do to help us is the following:

Please don't send your child to school telling them that if they feel unwell they can go to the office and ask them to ring you and that you will come and collect them. Instead, please tell them that you think they are well enough to go to school!

Every School Day Counts



Every Minute Counts

LATENESS = LOST LEARNING

(Figures below are calculated over a school year)

5 Minutes late each day	3 days lost!
10 Minutes late each day	6.5 days lost!
15 Minutes late each day	10 days lost!
20 Minutes late each day	13 days lost!
30 Minutes late each day	19 days lost!

Be at the
classroom on
time and ready to
learn!

Thank you for your support.



Bickley Primary School is a member of Nexus Education Schools Trust and is committed to safeguarding and promoting the welfare of children and young people and expects all staff and volunteers to share this commitment. Nexus Education Schools Trust (NEST) is a charitable company limited by guarantee and registered in England and Wales Company Number 08753719. The registered office is at Brackley Road, Beckenham BR3 1RF Website: www.nestschools.org